

CRANETECH

CRANETECH & MACHINERY INFRATECH



AN ISO 9001:2015 COMPANY



CRANETECH

CRANETECH & MACHINERY INFRATECH

Better Service for Material Handling Equipments

GSTIN : 09DRLPS5200P1Z3

Office Address: A-119, Sector-20, Noida-201301 (U.P.)

Email : cranetechinfra1000@gmail.com, info@cranetechnoida.in

Contact: 9599177209, 9410647209



ISO : 9001: 2015

ISO 9001:2015
(Quality Management System)

www.cranetechnoida.in

CRANETECH & MACHINERY INFRATECH

Cranetech is a leading crane manufacturer & supplier with global presence. Cranetech has achieved the trust of its clients the world over by providing high quality customized crane solutions packed by top-notch. Cranetech has developed the skills to combine design, production engineering and site & service process requirement for industries.

Cranetech provide valuable products as EOT Crane, Gantry Crane, Workshop Crane, Electric Wire rope Hoist, JIB Crane, Goods Lift, Stacker, Electric Chain Hoist, Constructional Tower Hoist, Winch Machine Etc.

ABOUT US:

We are Cranetech, carry the weight of our customers with care by manufacturing and service with safe and efficient material handling equipments like overhead crane, Hoist Goods Lift, Stackers in their production shop and projects.

Our services and products are all about customization space saving, high uptime and safe handing. We are in business since 2018 and provide service to pump industries, steel plants, packaging company, moulding industries, ware house etc.

VISION:

Our vision is to be a leader, customer delight is the focus. Cranetech envisions itself, at the helm of an Industry and working towards continuous improvement in technology and quality, being completely responsive to our customer's requirements and continuous learning will be the way of the life.

MISSION:

To be the global leader and customers first and the best choice in cranes. To establish CRANETECH & MACHINERY INFRATECH as a synonym for quality, safety, continuous improvement and dependability.

EOT CRANE

We manufacture Electric overhead traveling crane with capacity 500 kg to 100 Ton.

Type of EOT :- Single Girder & Double Girder & monorail

Electronics :- With Drive & Without VVF Drive

Colour Code :- Yellow and Orange & Blue

Control :- Pendant and Wireless Crane



GANTRY CRANE

This is a crane built atop a gantry, which is a structure used to straddle an object or workspace. A gantry crane is a type of overhead crane with a single or double girder configuration supported by freestanding legs that move on wheels or along a track or rail system.



JIB CRANE

Jib Crane has a horizontal member that supports a moveable hoist fixed to a wall or to a floor mounted pillar is known as Jib Crane used mostly in Industrial premises and on Military vehicles, the Jib May swing through an arc given additional lateral movement.



SEMI GANTRY

A semi gantry crane is our single leg crane, which is ideal for providing material handling solutions in facilities where space is an issue due to machinery. Double girder semi gantry crane are a cost effective alternative wherever the installation of bridge crane is impractical due to a need of raised runway.



TOWER HOIST

We manufacture tower hoist which require minimum maintenance. They are used to lift concrete and other construction material for slab construction.



GOODS LIFT

Facilities :- Manufacturing, AMC, Service, Reconditioning, Overhauling, Breakdown

Type :- Winch Type, Hydraulic

Lifting Height :- 3 mtr - 50 mtr

Heavy duty guide shoes & buffer spring

VVF Drive and Display control drive (Lop & Cop)



PASSENGER LIFT

Facilities :- Manufacturing, AMC, Service, Reconditioning, Overhauling



SCISSOR LIFT

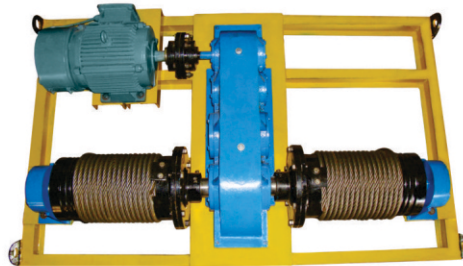
Scissor lifts are type of mechanism that allows for vertical displacement of some load, through linked, folding supports in a crisscross 'x' pattern, referred to as a pantograph.



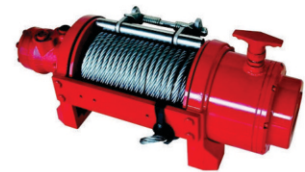
WINCH MACHINE



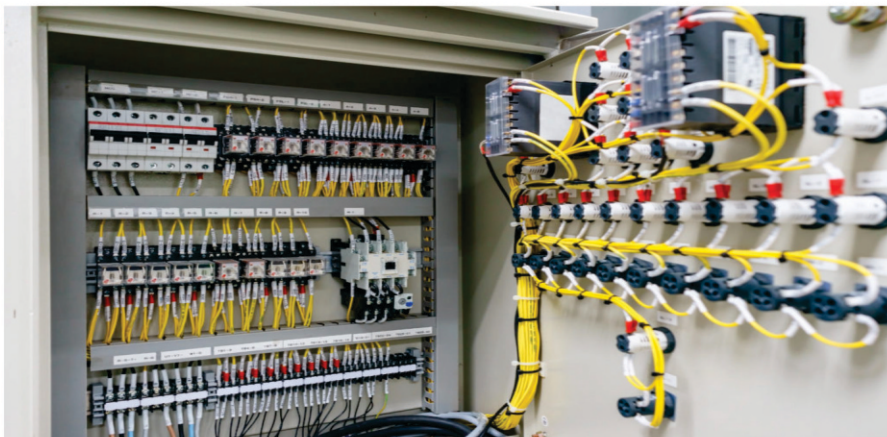
Single Drum Winch Machine



Double Drum Winch Machine



ELECTRICAL CONTROL PANEL



ELECTRIC WIRE ROPE HOIST

- We manufacture durable and high efficient electric wire rope hoist.
- Manufacturing capacity - 500 kg to 10 Ton.
- Squirrel cage crane Induction motor with 50% CDF/Hour.
- Single Helical Gearbox.
- Easy availability of spare, low maintenance & high efficient machine.



ELECTRIC CHAIN HOIST



CHAIN HOIST WITH UP DOWN
& CROSS TRAVEL MOTION



CHAIN HOIST WITH
UP DOWN MOTION ONLY

CHAIN PULLEY BLOCK

Capacity: 1 Ton - 10 Ton

Lifting Height: As per customer requirement



SPARE PARTS

- Bottom Hook
- Limit Switch
- Thrustor Brake
- EM Shoe Brake
- BUSBAR (DSL) System
- Wireless Remote
- Rubber Buffer
- Anti Collision Device
- Steel Wire Rope
- Polyester Sling
- Flexible Cables
- Safety Wire
- Lift Guide Shoe
- Electric Motor
- Gearbox (All Type)
- Load Cell
- Safety Latch
- EOT Crane Wheels
- Axle & Pinion
- Pulley (Cast Iron)
- Spring Buffer
- DSL Cover/Joiner
- Cable Trolley/Load
- Rail Line/SQ BAR



MACHINING ITEMS & TECHNOLOGY

- LT Wheel Machine work for EOT Crane
- Pulley (Mild Steel & Cast Iron)
- Brake Drum & Pinion & Axle
- L-Housing for EOT Crane

STRUCTURE INSTALLATION

- Column Installation (Mild Steel)
- Gantry & Rail Line Installation
- Truss Fabrication & Installation
- Structure capacity increase technology
- Heavy fabrication work / piece rate

GEARBOX MANUFACTURING

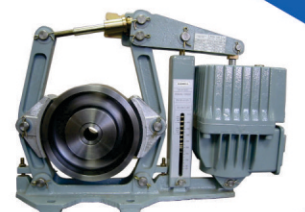
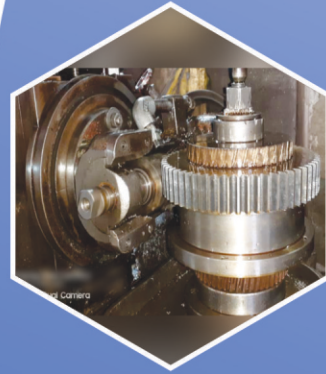
- Helical gearbox (Required ratio & center)
- Axle of Gearbox & shaft of axle
- Gear & Pinion of gearbox.
- Service & maintenance of gearbox
- Worm gearbox supply & mfg & service
- Single, Double & Triple Stage

ELECTRONICS ITEMS

- Wireless Remote Device for EOT Crane
- Remote Pendant for EOT Crane & Other
- VVF Drive & DBR & Relay Equipment
- Long Lever, Gravity & Rotary Limit Switch
- Anti Collision Device
- Load & Weight Measuring Device
- Lop & Cop Display goods & Passenger Lift
- Sensor, Lighting System
- Contactor
- Overload Relay
- Phase Preventor

BRAKING SYSTEM

- Thrustor Brake & Part for EOT Crane & Lift
- EM Shoe Brake (D = 100mm - 600mm)
- AC & DC Disc Brake (As per requirement)
- Brake Disc, Brake Liner, Brake Hub, Coil
- Thrustor, Spring, Brake Shoe, Thrustor Oil
- Brake Drum Coupling & Rigid Coupling



QUALITY POLICY

Our philosophy of committed to fulfill commitments shall guide our pursuits to achieve business goals to deliver best in it Class uncompromising quality and affordable products coupled with caring attitude to achieve highest levels of customer delight. We take quality personally in everyday work. Each Cranetech employee has a responsibility to focus on customers needs.



CUSTOMER RELATIONS:

Cranetech always follow customer relationship management (CRM). Customers relations encompasses all of the important functions that customer service perform but also include the effort made before and after customer interacts.



ANNUAL MAINTENANCE CONTRACT:

Cranetech offers AMC of EOT Crane, Gantry Crane, Under Slug Crane Goods Lift, Stacker, Tower Hoist, Rack-Pinion Elevators. We provide efficient and quality service in all over India with a most competitive price. AMC charge has been depend on capacity and specification of equipment.



OVERHAULING & RECONDITIONING

Overhauling of Equipment with Installation of new spare installation like - Replacement of brakes, gearbox, motor, cable trolley, pendant and spare of electrical panel.

Reconditioning of EOT Crane as increasing the speed, increasing the capacity of box girder, crab and equipments, change the length of span, increasing the lifting height, change of wheel dimensions, new VVF Drive and panel installation.





CRANETECH

CRANETECH & MACHINERY INFRATECH

GSTIN : 09DRLPS5200P1Z3

Office Address: A-119, Sector-20, Noida-201301 (U.P.)

Email : cranetechinfra1000@gmail.com, info@cranetechnoida.in

Contact: 9599177209, 9410647209